

As in past years, the NewYork-Presbyterian Healthcare System will be hosting its annual Quality Symposium this Fall. A key feature of our Quality Symposium has been the opportunity for member facilities to submit abstracts for possible presentation at a poster session, providing an opportunity to highlight quality and patient safety projects within your institution. As we did last year, the top-rated abstracts as judged by the peer-review process will be invited to present their project from the podium.

Abstract topics for consideration include:

- Applied research or best practices in quality and safety of patient care;
- Impact of quality/safety issues on public perception or patient satisfaction;
- Use of quality/safety data for institutional planning;
- Effect of quality/safety issues on finances, reimbursement, pay-for-performance;
- Methodological issues—data acquisition, data quality, documentation, and analytics;
- Management and/or organizational issues related to quality, culture of safety, environment.

Organizational relevance, including potential generalizability and sustainability will be considered. The project may be unit-based, institution-wide, or regional in scope. Abstracts will be judged on 6 separate criteria including:

1. **Quality and patient safety impact:** The extent to which the improvement addressed high-volume, high-risk populations successfully.
2. **Breakthrough Strategies/Innovation:** The extent to which the initiative breaks new ground—new techniques, methods, practice models.
3. **Execution:** Extent to which the initiative adhered to quality improvement principles and methodologies.
4. **Quantitative/Qualitative Measures:** The extent to which the initiative includes appropriate measures to effectively demonstrate results.
5. **Sustainability:** The extent to which the initiative has been sustainable.
6. **Cost Effective:** The extent to which the initiative addresses the effective use of resources, value-based decisions, or corresponding savings.

All acceptable submissions will be published in our System journal, the *NewYork-Presbyterian System Quality Review* (SQR) which is widely distributed within the System and to leading healthcare organizations throughout the country.

The date and location for this year's Quality Symposium have yet to be set but most likely it will be some time within the first couple weeks of November. **The deadline for submission of abstracts is Friday, September 30, 2011.**

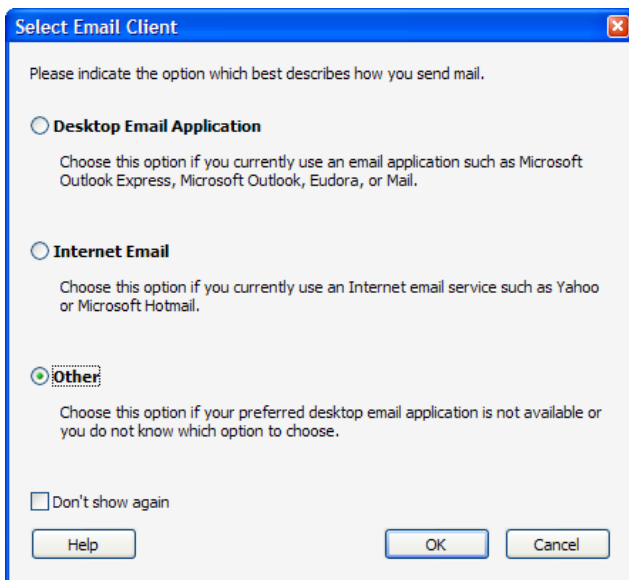
If you have any questions, please contact Brian Taylor @ 212.746.1711 or email brt9012@nyp.org

Instructions for Submitting an Abstract

Included with this message is a PDF form that you can use to fill out your abstract and send back electronically. While we welcome multiple submissions, each abstract should be filled out in a separate PDF form.

On the first page, we ask that you provide us with contact information along with the title of your abstract, author(s), and the name of the presenter should your abstract be selected for presentation on the day of the Symposium.

The second and third pages in the PDF form have fields to enter text for 6 sections: (1) background/introduction; (2) problem statement; (3) project goal(s); (4) methods; (5) results; and (6) conclusions. (You may find it easier to initially edit your abstract in Word and then copy and paste the final text into the relevant sections in the PDF form.) The amount of text is limited to the size of each text box on the form. You can save the PDF form to your hard drive if you plan to work on your abstract in stages.



When you are ready to send your abstract, click the “Submit by E-mail” button on the bottom right-hand corner of the last page on the PDF form. A dialog box like the one shown to the left will pop up; follow the instructions depending on which email program you use.

Please note that the PDF form allows only plain text. Do not incorporate graphs, pictures, or tables into the form. If you wish to include figures or tables as part of your abstract, submit these in the same email message that includes your completed PDF form. Figures can be in either Excel (e.g. graphs), or JPEG format (e.g., pictures, screen shots). Tables can be in either

Excel or Word format. Please do not use Powerpoint for figures or tables. *All figures and tables should be clearly labeled and properly referenced (e.g., Figure 1 or Table 2) in both your abstract and the Excel/Word/JPEG file(s).*

If you have any questions about an abstract or the submission process, please contact Brian Taylor @ 212.746.1711 or email brt9012@nyp.org